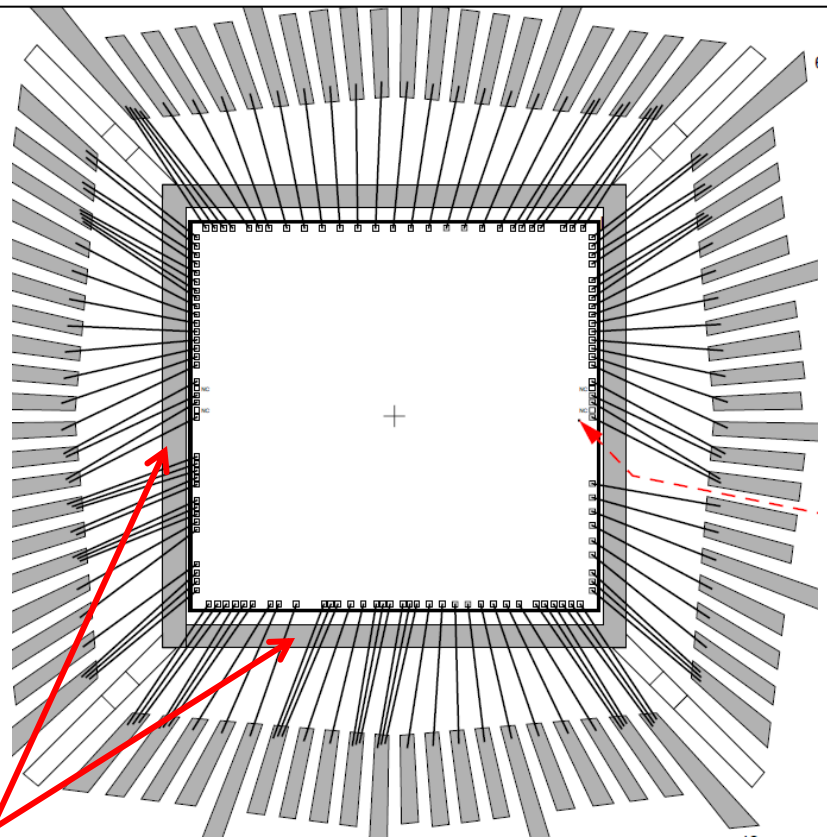


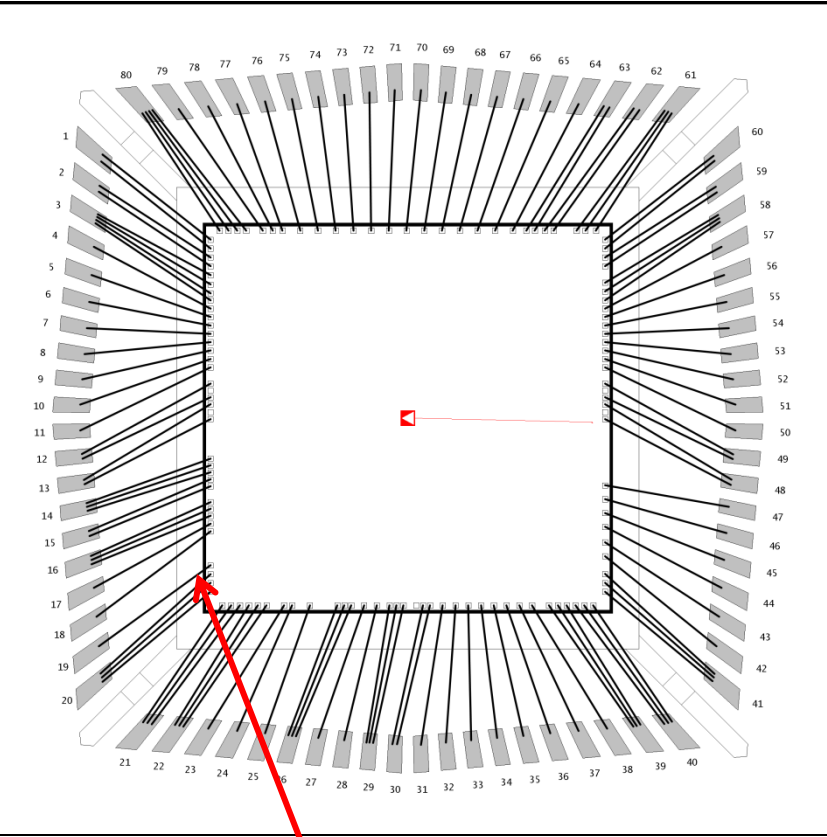
Package Revision – Description, Current vs. New Leadframe

Current Lead Frame (Ag plated Ring)



Ag Ring Plate

New Lead Frame (No Ag Ring)



No Ring Plate

ADAU1966 Die Rev C

*Preconditioned per JEDEC/IPC J-STD-020

QUALIFICATION RESULTS			
TEST	CONDITIONS	SAMPLE SIZE	RESULTS
High Temperature Operating Life (HTOL)*	JEDEC JESD22-A108	9x77	Pass
Highly Accelerated Stress Test (HAST)*	JEDEC JESD22-A110	5x77 4x45	Pass
Temperature Cycle (TC)*	JEDEC JESD22-A104	9x77	Pass
Autoclave (AC)*	JEDEC JESD22-A102	9x77	Pass
High Temperature Storage Life (HTSL)	JEDEC JESD22-A103	4x45 5x77	Pass
SHR (Solder Heat Resistance)*	ADI-0049	1x30	Pass
Latch-Up	JEDEC Standard 78	6	Pass $\pm 200\text{mA}$ @ +5.4V / +8.25V
Electrostatic Discharge Human Body Model	ESDA/JEDEC JS-001-2011	3/voltage	Pass $\pm 1500\text{V}$
Electrostatic Discharge Field-Induced Charged Device Model	JESD22-C101	3/voltage	Pass $\pm 1000\text{V}$
Electrostatic Discharge Machine Model	JESD22-A115	3/voltage	Pass $\pm 200\text{V}$